

Installation Manual

AB-RABK-ZJ – High Clearance ZJ Rear Axle Bracket Kit

Last Revision No.: 3/1/09

Thank you for purchasing a Clayton Off Road Mfg Long arm suspension.

Please check to make sure you have all necessary parts before you start your install.

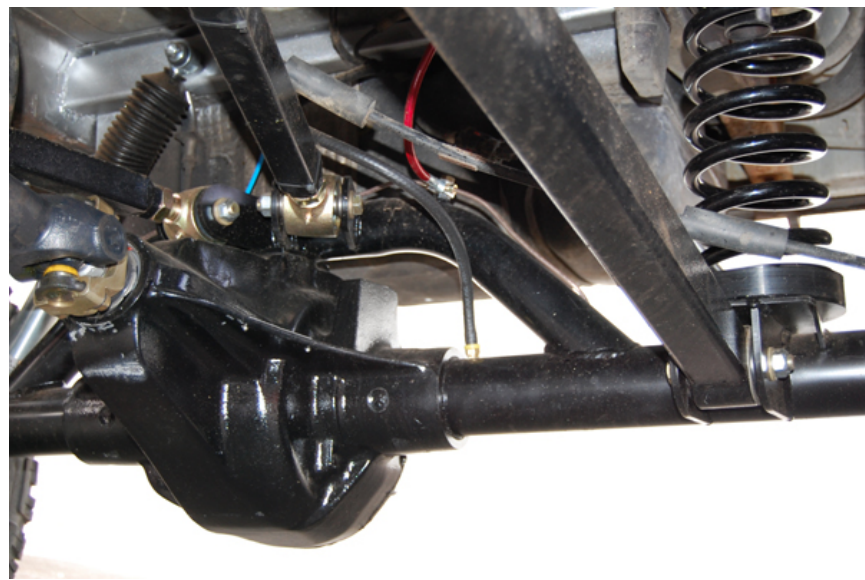


1. This axle bracket kit is intended to be installed on a rear axle in a ZJ model Grand Cherokee. This kit is **ONLY** designed to be used with a Clayton Off Road Mfg. 4 link suspension design. It does **NOT** come with and can **NOT** be used with a standard 5 link upper bracket setup. The triangulated shock kit will also make it impossible to use a trackbar.
2. Start with a bare axle. Reference the AutoCAD drawing below for proper measurements.
3. Step 1 is to set a proper pinion angle.
4. Once the pinion angle is set, you can weld on the lower control arm brackets. The longer ones are used on the outside. The lower control arm brackets and the top plate should be welded on flat with the pinion angle set.
5. The CNC machined lower coil buckets can be moved around front to back and side to side a little to properly position the coils in line with your upper coil bucket.
6. Next weld on your lower shock conversion kit. Depending on what type of shock you use, check for clearance between the shock and new weld on mount. If shock contacts trim bracket accordingly.
7. The new upper shock conversion kit welds into the uni-body. It is laser cut and bent to properly fit

Installation Manual

AB-RABK-ZJ – High Clearance ZJ Rear Axle Bracket Kit

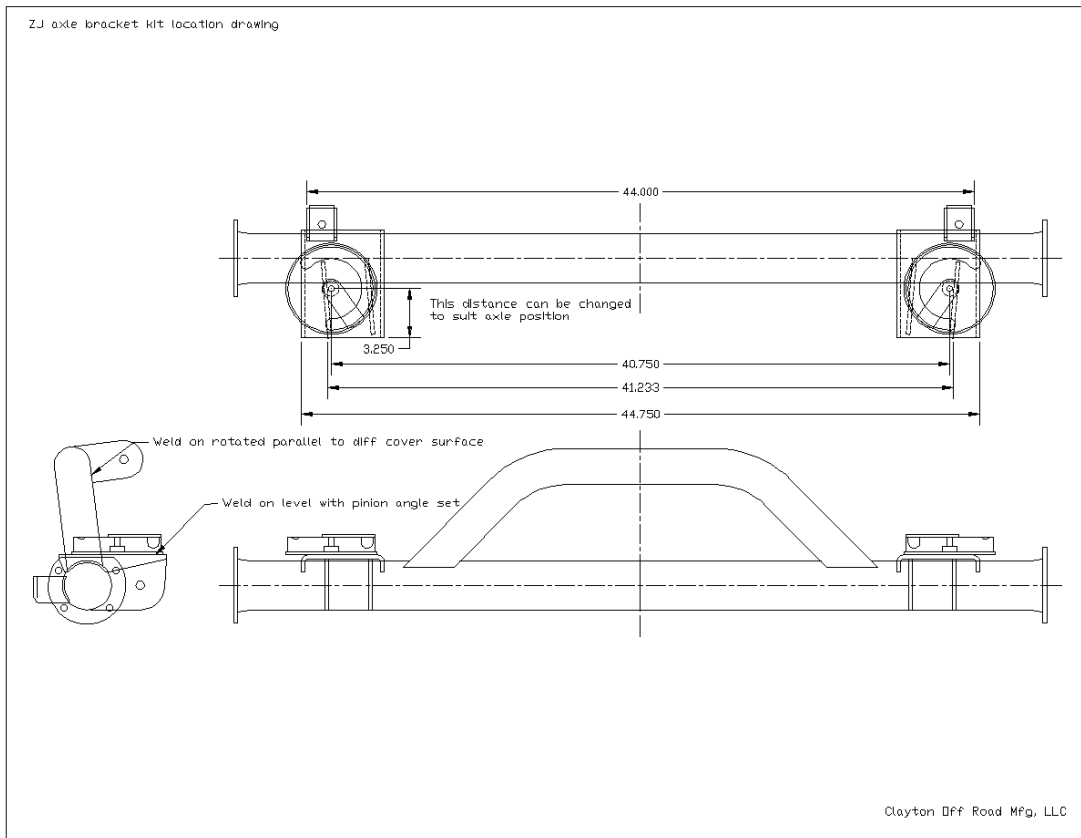
Last Revision No.: 3/1/09



Installation Manual

AB-RABK-ZJ – High Clearance ZJ Rear Axle Bracket Kit

Last Revision No.: 3/1/09



Clayton Off Road Mfg. – 1261 Meriden Road – Waterbury – CT – 06705 – (203) 757-0339 sales@claytonoffroad.com

Installation Manual

AB-RABK-ZJ – High Clearance ZJ Rear Axle Bracket Kit

Last Revision No.: 3/1/09

Damage or Missing Parts Policy: If you receive a product that is damaged or missing parts you must contact us within 14 days to arrange replacement. You may be required to submit photos of damaged parts before new parts are sent. Damage parts may be requested to be returned for inspection.

Return Policy: You have 30 days to return a product in its original packaging. Parts cannot have been installed, painted and/or modified in any way. You must contact us to obtain a RGA # (Return Goods Authorization) before shipping your product back. All returns are subject to a 15% restocking fee. Your return must have the return authorization number clearly marked on the outside of the package and must be shipped prepaid. Packages shipped COD will be refused. Returns are subject to inspection and may be refused if they are damaged or used. You are responsible for proper shipping to ensure product is not damaged or lost. We recommend insuring your product for the full amount in the case it is damaged or lost during return shipment.

Warranty Policy: Clayton Off Road Mfg. comes with our abuse proof limited lifetime warranty against bending or breaking our control arms only. This covers the original purchaser of our suspension lift. This warranty cannot be transferred to a secondary purchaser and is void if the control arm is modified in any form or not used in its proper application. Original purchaser must obtain a RGA # and is responsible for shipping the product back and agrees to return shipment charges. This warranty does not cover worn bushings, missing snap rings, or any kind of rust damage to the threads or inserts or actual arm.

What is not covered:

Clayton Off Road Mfg. components may have minor finish damage to powder coated or plated surfaces, which may occur during shipping and is not covered under warranty. Johnny Joint bushings, washers, snap rings, OEM rubber bushings, hardware, brake lines, shocks, springs, skid plates, trackbars, and any mounting brackets are not covered. These parts are subject to wear and are not considered defective when worn. They are warranted for 90 days from the date of purchase for defects in workmanship only. Products or components which have been subjected to abuse, accident, alteration, modification, improper installation, tampering, negligence, misuse, or products installed on a vehicle used in sanctioned racing events. A race is defined as any contest between two or more vehicles, or any contest of one or more vehicles against the clock, whether or not such contest is for a prize.

Clayton Off Road Mfg. is not responsible for any retail parts that may be sold.

Clayton Off Road Mfg. shall not be liable for any loss, damage or injury, whether ordinary, direct, special, incidental or consequential damages, arising from the manufacture, sale, installation, resale, delivery, possession, handling or use of its products.

Clayton Off Road Mfg. is not responsible for typographical errors either in pricing or in content.

Warranties, policies and prices subject to change without notice.