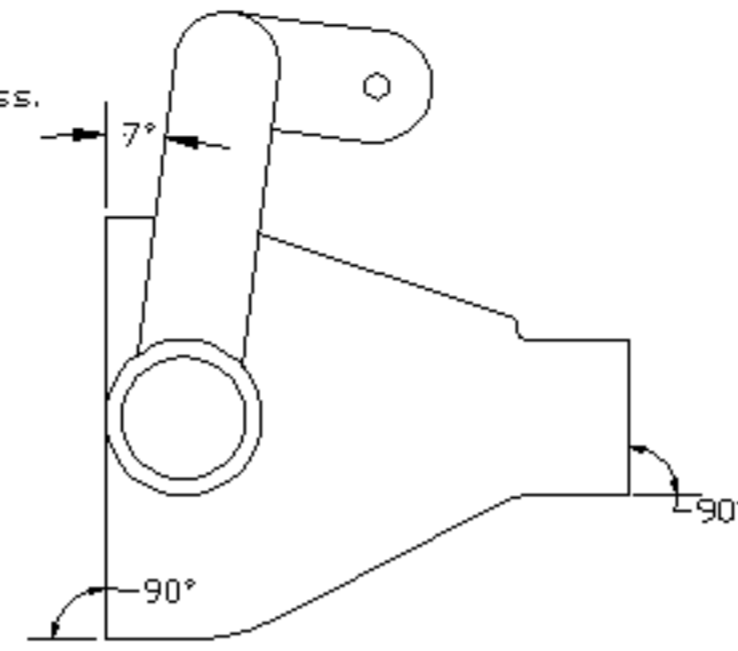
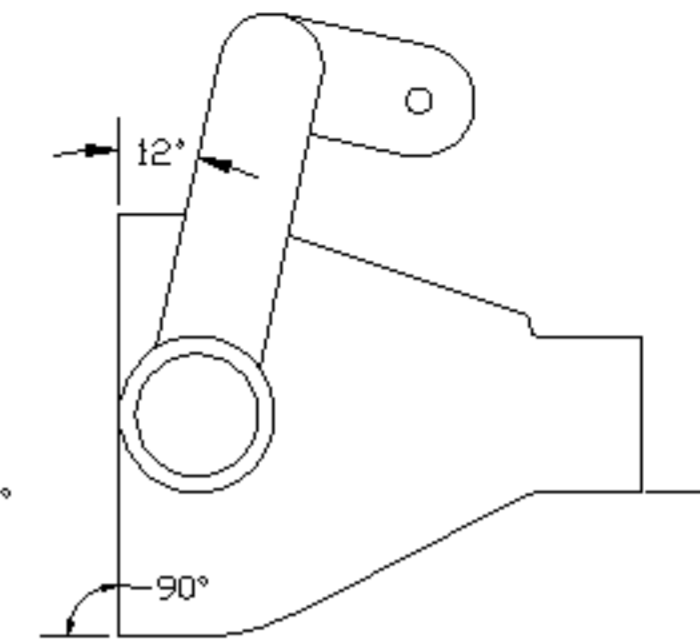


LJ axle bracket kit location drawing

Standard setup 5.5' of lift SYE kit the pinion angle will be approx. 19 degrees.
 If you are using a high pinion axle the pinion angle will be approx. 5 degrees less.
 This means the truss should be welded on at approx. 7 degrees.
 Remember these are approx. angle make sure you double check angles
 for your setup.



Jack stand setup view high pinion axle



Jack stand setup view low pinion axle

