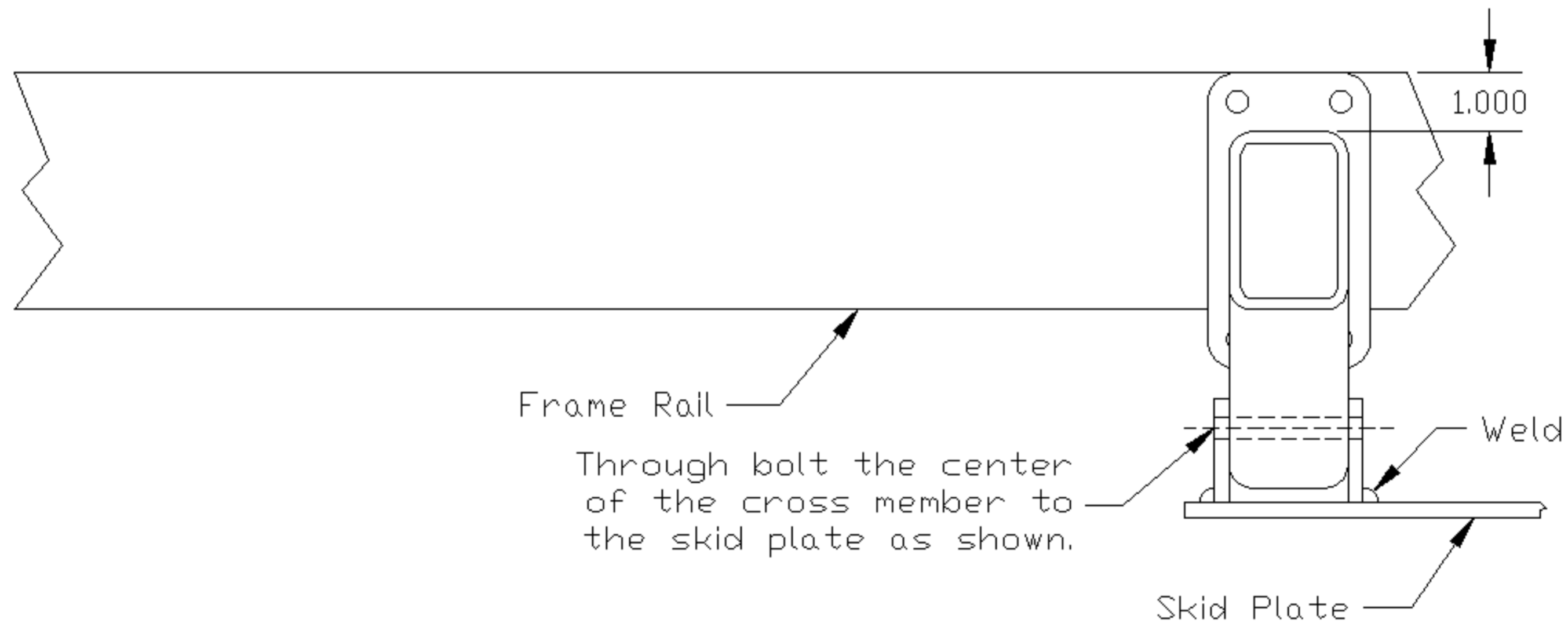


TJ Double Tri Rear Stretch Kit
Rear Cross Member Skid Plate Mounting Drawing

Front of Vehicle →



The cross member has 3" of drop below the frame rail when the top edge is mount 1" down from the top of the frame rail. If you want less drop the cross member can be moved up to sit flush with the top of the frame rail.

Clayton Off Road Mfg. LLC