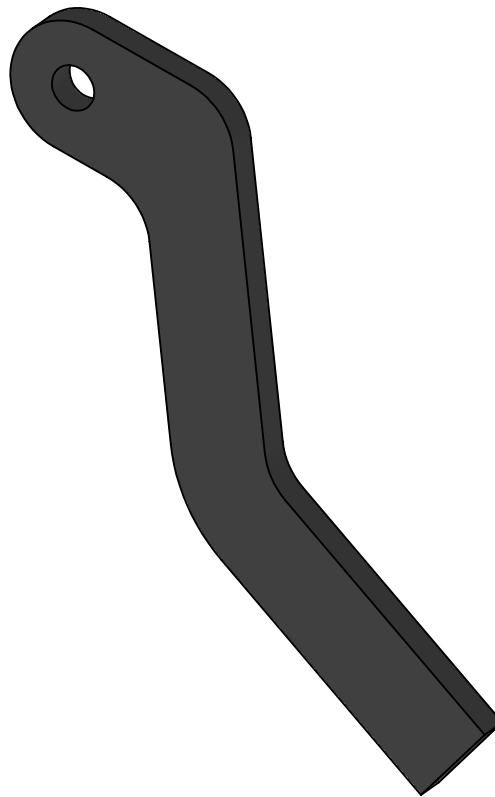
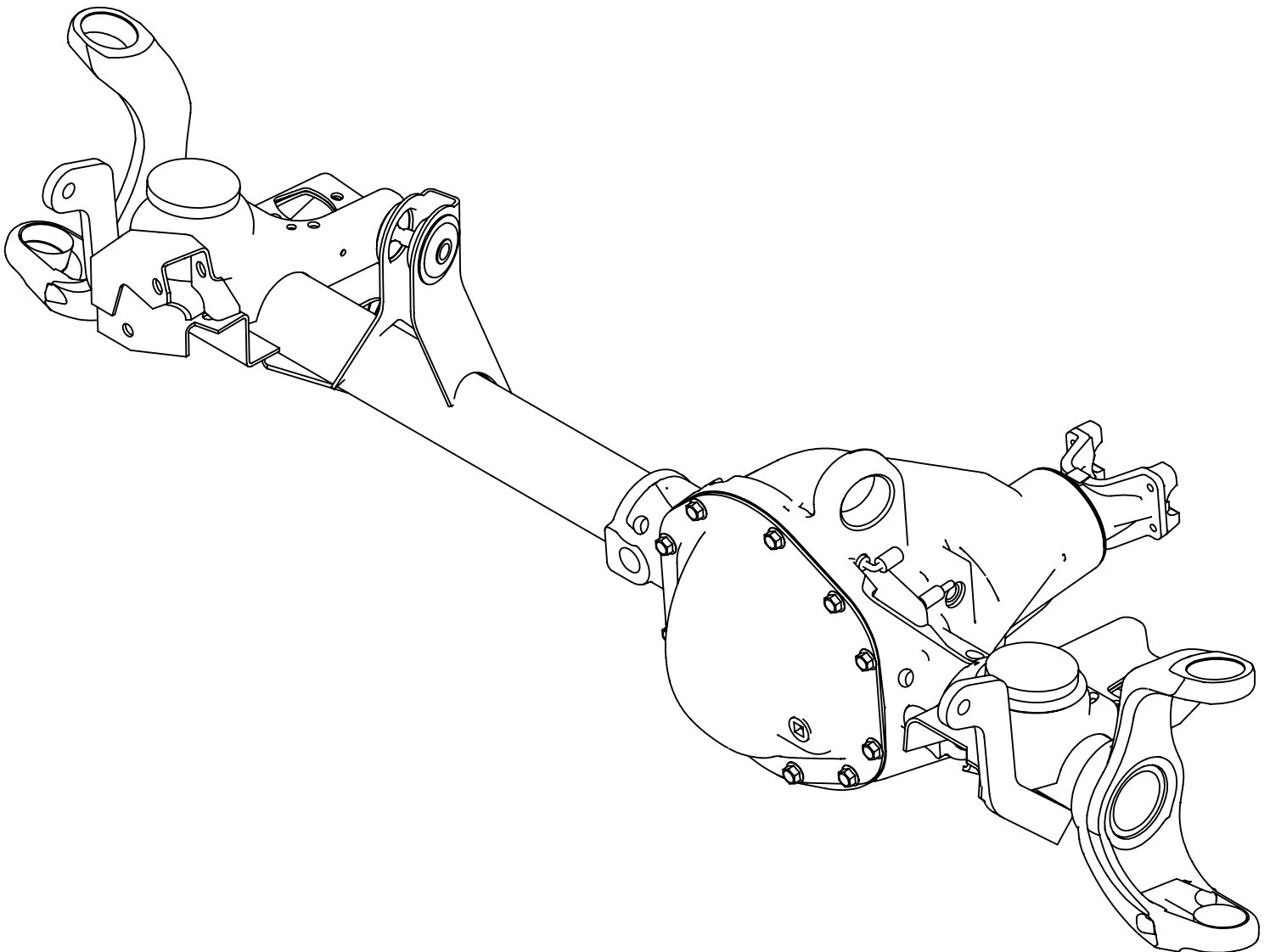


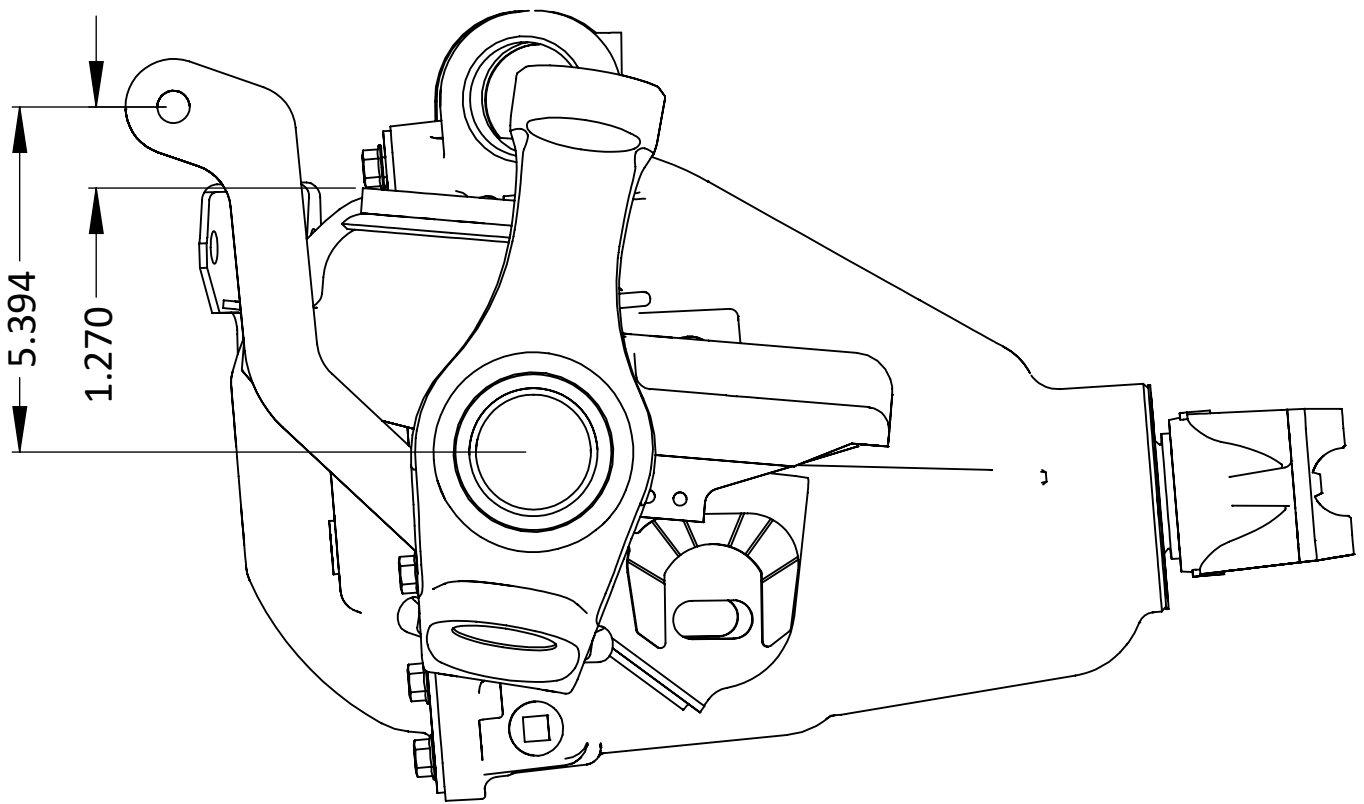
**CLAYTON OFF ROAD
COR-1100114
JEEP FRONT SWAY BAR TAB (1984-2006, TJ/LJ/XJ/ZJ)**



NOTES: This product may require general welding, fabrication and automotive mechanic skills. Welding should only be done by a competent welder. Clayton Off Road implies no guarantees or warranties and is not liable for improper installation. Some grinding and fitment may be required when installing this product. Every vehicle varies slightly and some fabrication may be required. For more information please visit our website.

- Step 1: Have vehicle sitting at ride height on a level surface.
- Step 2: Remove passenger side sway bar link from axle.
- Step 3: Remove old sway bar tab from axle.
- Step 4: Adjust sway bar link so that is 1.25" to 1.5" shorter.
- Step 5: Attach new sway bar tab to sway bar link.
- Step 6: Hold or clamp new sway bar tab in to position.
- Step 7: Make sure the bottom of the sway bar tab has enough contact with the axle tube to make a strong weld.
- Step 6: Tack weld into place.
- Step 7: Repeat on driver side if installing two new sway bar tabs.
- Step 8: Weld into place to axle tube and spring perch where ever possible.
- Step 9: Paint axle.





These sway bar tabs move the mounting location up approximately 1.250". It maybe possible to move them slightly higher if needed. Just be sure the are welded securely to the axle tube.

