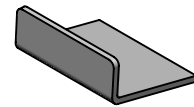
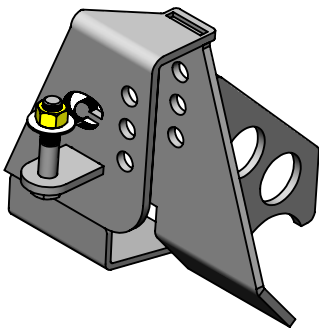


**CLAYTON OFF ROAD
COR-1120120
JEEP HIGH STEER TRACK BAR MOUNT (1984-2006, TJ/LJ/XJ/ZJ)**

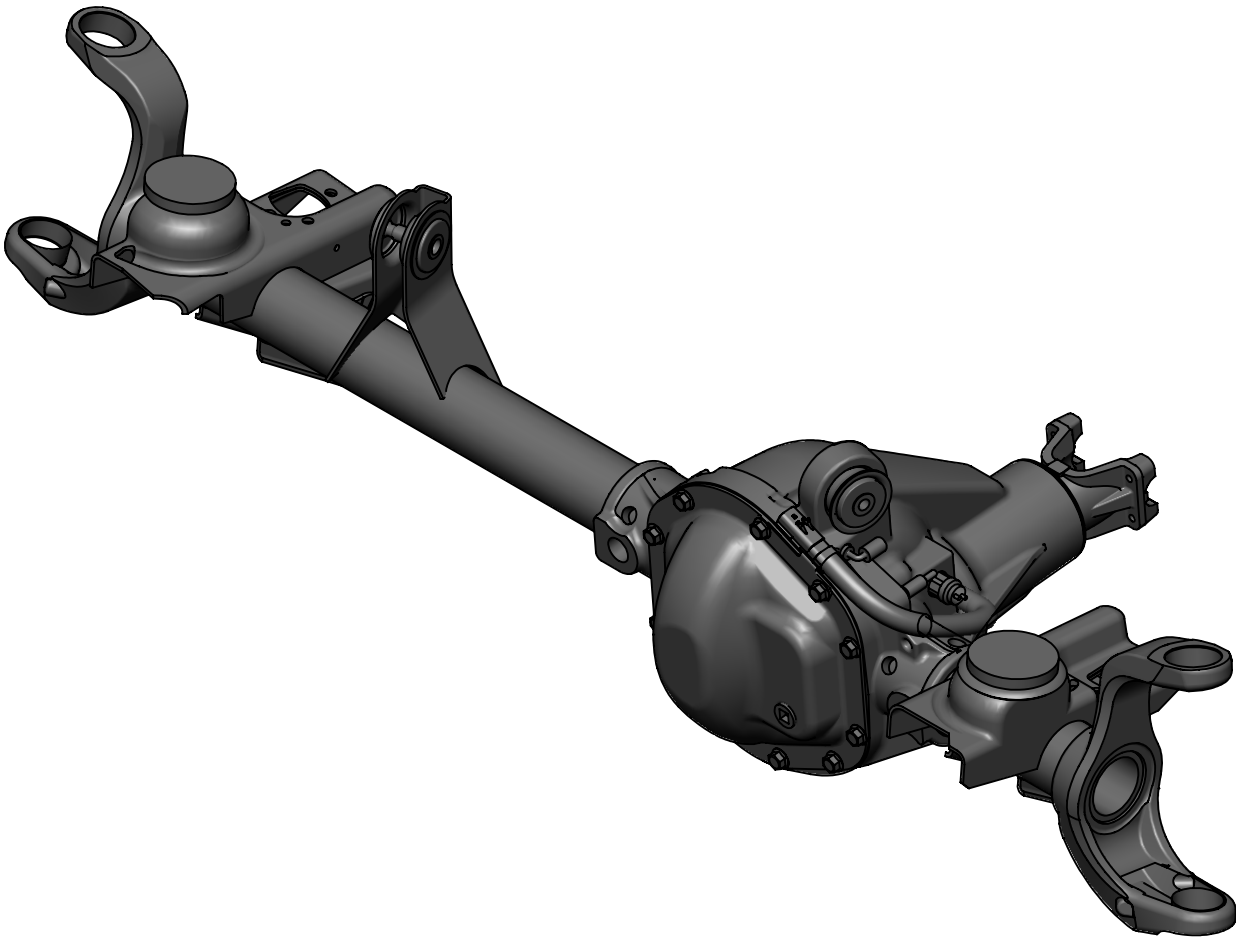


NOTES: This product may require general welding, fabrication and automotive mechanic skills. Welding should only be done by a competent welder. Clayton Off Road implies no guarantees or warranties and is not liable for improper installation. Some grinding and fitment may be required when installing this product. Every vehicle varies slightly and some fabrication may be required. For more information please visit our website.

Refer to picture below.

Step 1: Remove axle from vehicle. (optional)

Step 2: Remove factory sway bar and track bar mounts.



Refer to picture below and 3 drawing views for measurements.

Step 1: Weld in spring perch caps where ever possible.

Step 2: Trim back spring perches to welds.

Step 3: Locate track bar mount on axle.

Step 4: Tack into place.

Step 5: Weld to spring perch front and back.

Step 6: Weld to axle tube and front and back.

Step 7: Weld to side of spring perch.

Step 8: Install gusset to axle. Trim as needed if using an axle truss.

Step 9: Install high steer sway bar mounts if needed. Part number 1120110.

Step 10: Paint axle.

Step 11: Install in vehicle if removed.

