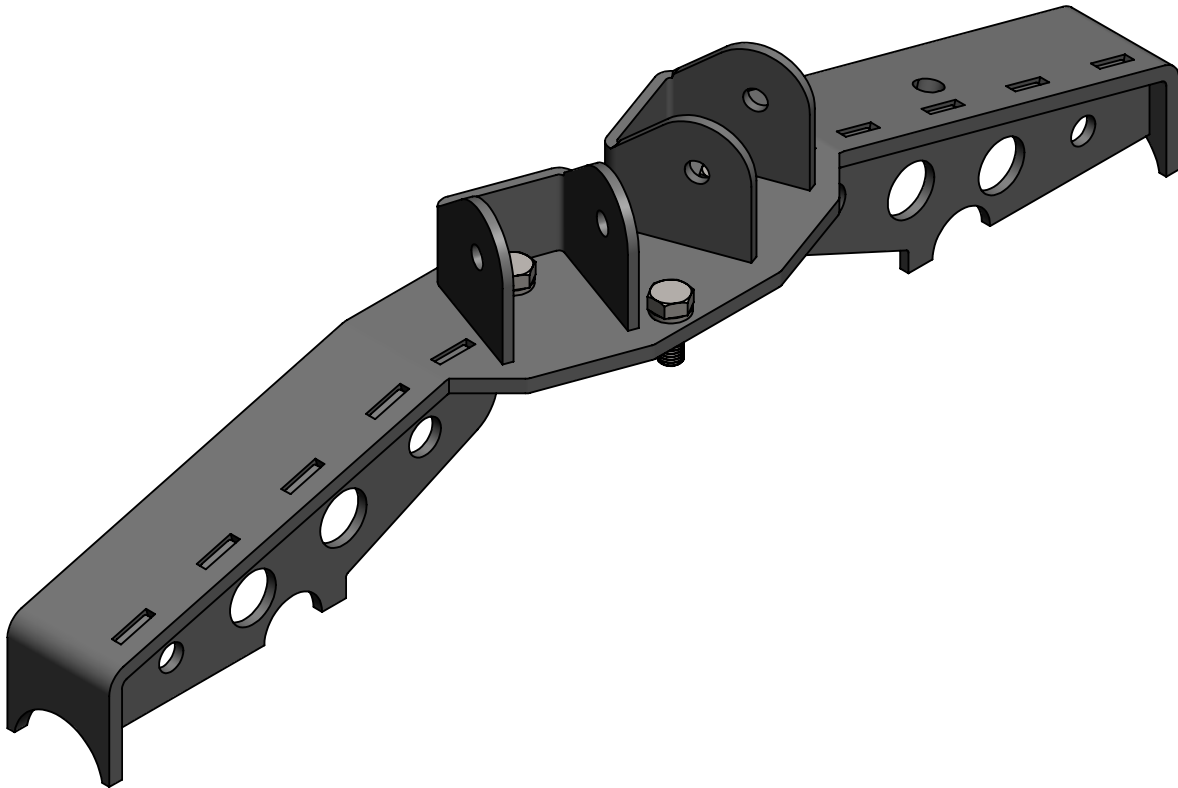


**CLAYTON OFF ROAD
COR-1206010
JEEP GRAND CHEROKEE REAR AXLE TRUSS (1999-2004 WJ)**



NOTES: This product may require general welding, fabrication and automotive mechanic skills. Welding should only be done by a competent welder. Clayton Off Road implies no guarantees or warranties and is not liable for improper installation. Some grinding and fitment may be required when installing this product. Every vehicle varies slightly and some fabrication may be required.

For more information please visit our website.

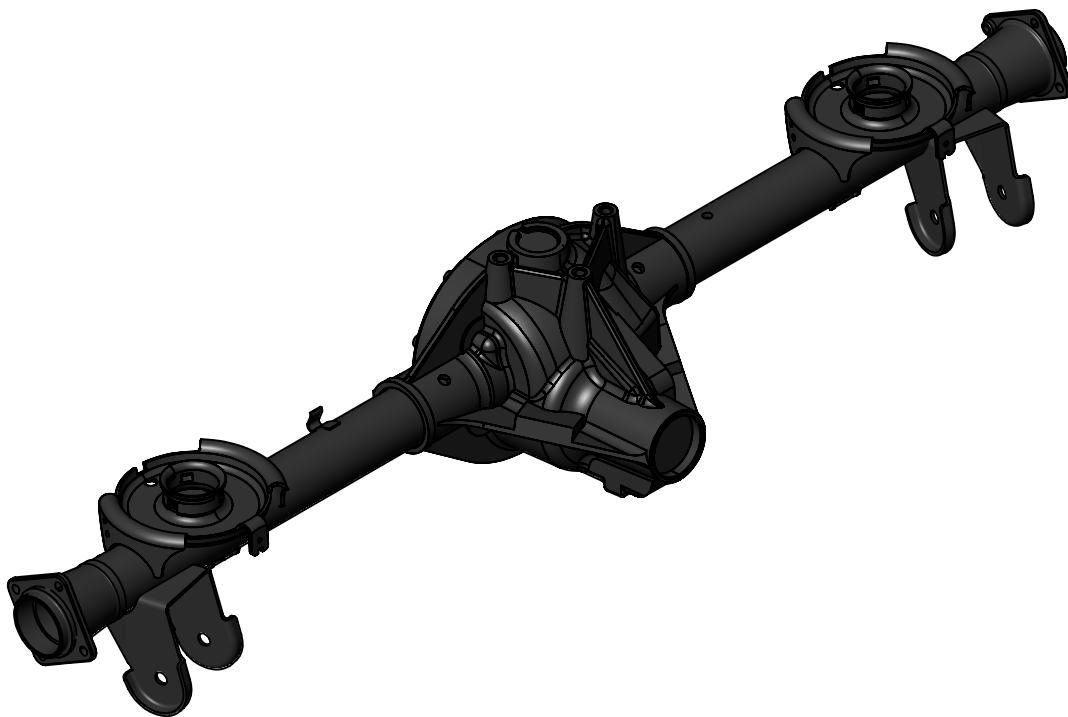
Refer to picture below.

Step 1: Remove axle from vehicle.

Step 2: Remove old upper control arm mount.

Step 3: Move brake lines out of the way.

Step 4: Clean axle tubes for welding.



Refer to picture below and 2 drawing views.

Step 5: Slide truss gussets into place.

Step 6: Bolt truss on to axle.

Step 7: Clamp truss ends tight against axle tube.

Step 8: Tack weld four corners of truss.

Step 9: Make sure bottom of gusset is in contact with axle tube.

Step 10: Weld bottom edge of gusset as indicated.

Step 11: Weld in keyways as indicated.

Step 12: Weld truss ends to axle tube on the inside.

Step 13: Remove bolts from truss.

Step 14: Align upper mounts with marks.

Step 15: Weld as indicated.

Step 16: Re-install bolts.

Step 17: Paint axle.

Step 18: Install axle in vehicle.

