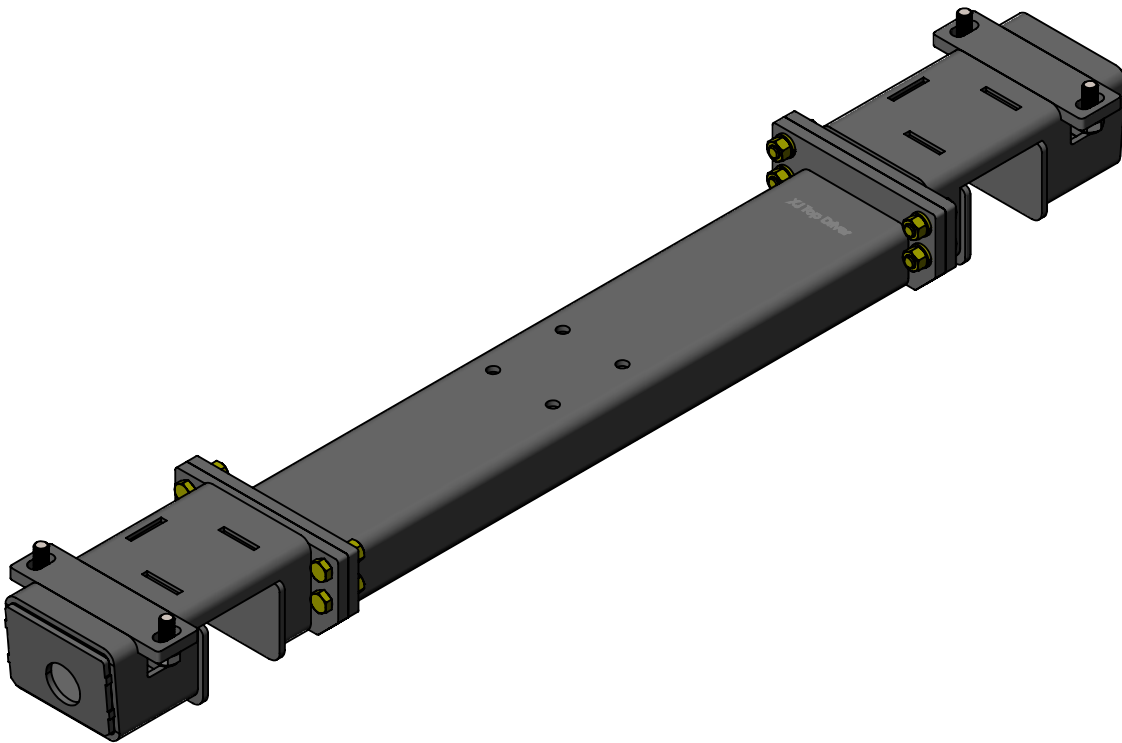


**CLAYTON OFF ROAD  
COR-2101100  
JEEP CHEROKEE FRONT 3 PIECE CROSS MEMBER (1984-2001, XJ)**



NOTES: This product requires general welding, fabrication and automotive mechanic skills. Welding should only be done by a competent welder. Clayton Off Road implies no guarantees or warranties and is not liable for improper installation. Some grinding and fitment may be required when installing this product. Every vehicle varies slightly and some fabrication may be required. For more information please visit our web site.

Refer to drawing views.

Step 1: Assembly cross member as shown.

Step 2: Support vehicle drive line.

Step 3: Remove old cross member.

Step 4: Clean frame for welding.

Step 5: We provide new mounting hardware for bolting the new cross member in place.

Step 6: If you have stubs in the uni-body use the washers and nuts provided.

Step 7: If you have holes in the uni-body use the socket head cap screws provided.

Step 8: Lightly bolt new cross member into place.

Step 9: Square and center cross member.

Step 10: Tighten bolts.

Step 11: Weld both sides along the front, back & end.

Step 12: Bolt transmission mount in.

Step 13: Weld end caps on with access holes aligned.

Step 14: Paint cross member.

