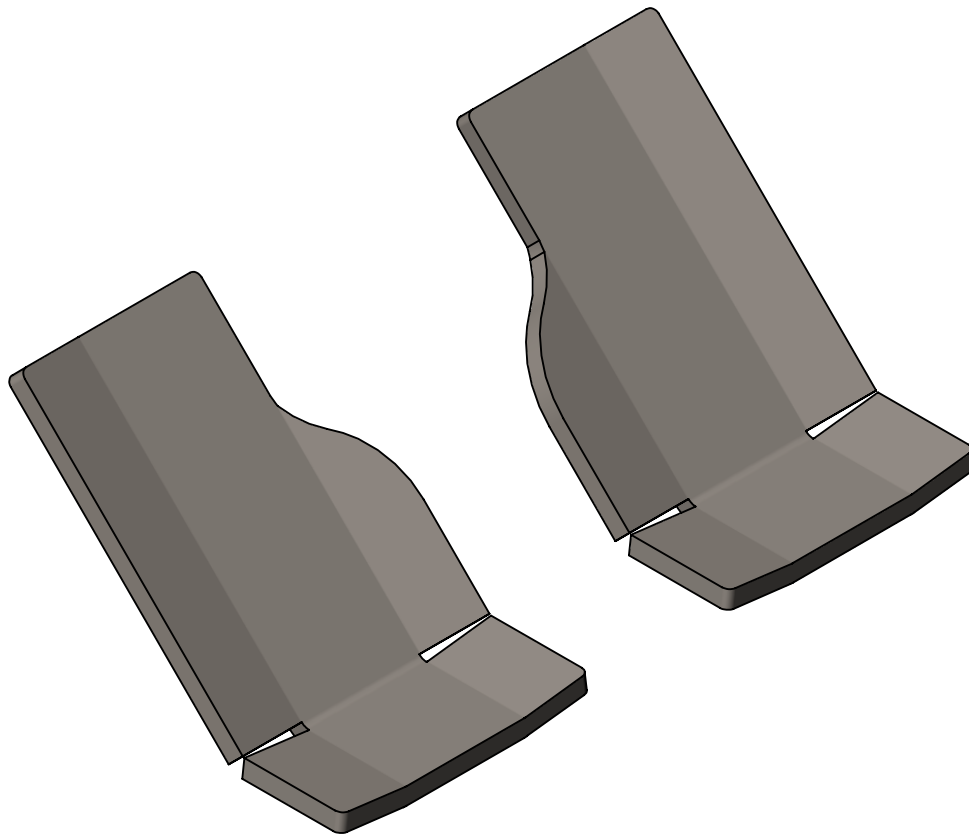


**Clayton Off Road  
COR-4109020  
Jeep Wrangler Lower Control Arm Skid Plates (2018+, JL)**



NOTES: This product may require general welding, fabrication and automotive mechanic skills. Welding should only be done by a competent welder. Clayton Off Road implies no guarantees or warranties and is not liable for improper installation. Some grinding and fitment may be required when installing this product. Every vehicle varies slightly and some fabrication may be required.

For more information please visit our website.

Refer to pictures below.

Step 1: Put wheel chocks in front and back of one front tire.

Step 2: Remove lower control arm.

Step 3: Remove paint from areas to be welded.

Step 4: Position skid plate on lower control arm bracket.

Step 5: Tack weld skid plate in position.

Step 6: Check lower control arm for clearance issues.

Step 7: Weld skid plate to bracket along both sides.

Note: Small stitch welds work well to fill gaps and prevent burning through the control arm bracket.

Step 9: Clean bare metal areas for painting.

Step 10: Paint all bare metal areas.

Step 11: Install lower control arm.

Step 12: Tighten bolts to proper torque specs.

Step 13: Repeat steps 1 through 12 on other side.

