



# INSTALLATION INSTRUCTIONS

Product: Adjustable Trackbar

Part Number: JKSOGS129

517-278-1226 • tech@jksmfg.com • www.jksmfg.com  
491 W. Garfield Avenue, Coldwater, MI 49036

## Welcome

CONGRATULATIONS on purchasing a new Adjustable Trackbar from JKS Manufacturing. We are committed to providing you with the best products available and your satisfaction is our first priority.

PLEASE READ these Installation Instructions carefully, and save them for future reference, as they contain important installation and maintenance information.

## Important

**NOT COMPATIBLE WITH right hand drive vehicles.**

**CHECK TORQUE SPECIFICATIONS regularly.**

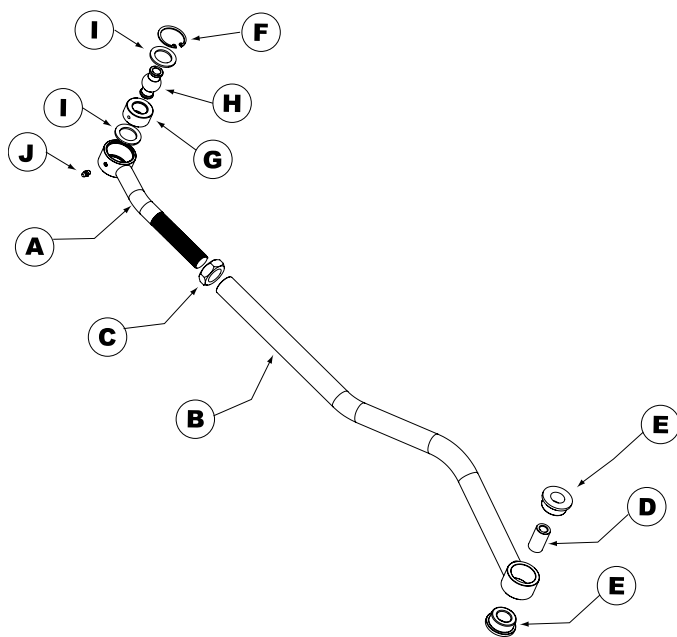
## Tools Required

- Metric/Standard Socket Wrench Set
- Torque Wrench
- Flat Head Screwdriver
- Tape Measure
- 1-1/2" Open-End Wrench
- Heavy Duty Ratchet Strap \*
- Anti-Seize Lubricant
- Hydraulic Press \*
- Wheel Bearing Grease

\* Asterisk denotes tools that are not required for some applications. Thoroughly read instructions first to determine which tools will be required for your application.

## Parts

	Description	Part #	QTY
<b>A</b>	Male Threaded (Axle) End	03170	1
<b>B</b>	Female Threaded (Frame) End	03055	1
<b>C</b>	1" NF Jam Nut	36270	1
<b>D</b>	Sleeve	138	1
<b>E</b>	Polyurethane Bushing	7087R	2
<b>F</b>	Snap Ring	CE91125	1
<b>G</b>	Spherical Bushing	CEES9385	1
<b>H</b>	Spherical Ball	CE911225	1
<b>I</b>	Retaining Washer	CE91126GM	2
<b>J</b>	Grease Zerk	7201	1



## Installation

### ❑ 1. REMOVE ORIGINAL EQUIPMENT (OE) FRONT TRACK BAR

- Remove front track bar and mounting hardware per the factory service manual instructions for your vehicle. Retain the original mounting hardware as it is required for Adjustable Trackbar installation. **HINT:** It will be necessary to remove the driver-side bumpstop to access the bolt on chassis end. A flat head screwdriver is useful for removing bumpstop from holder.



### ❑ 2. LUBRICATE BUSHINGS AT BOTH ENDS OF TRACKBAR

- Locate the bag of parts containing the Polyurethane Bushings and Sleeve (D & E).
- Liberally apply wheel bearing grease to surface of bushings.
- Assemble Polyurethane Bushings and Sleeves at the frame end of trackbar as indicated in the parts diagram on page 1.

### ❑ 3. MOUNT ADJUSTABLE TRACKBAR TO CHASSIS BRACKET

- Mount Frame End (B) of Adjustable Trackbar to the chassis rail bracket and secure with the original mounting hardware. Apply anti-seize lubricant to bolt threads. **HINT:** When installed correctly, the curve in Adjustable Trackbar should point toward the front of vehicle.
- Tighten original mounting bolt on chassis rail bracket to 75 ft-lb. using a torque wrench.

### ❑ 4. CENTER FRONT AXLE HOUSING

The front axle housing must be in perfect lateral alignment with vehicle chassis before Adjustable Trackbar installation can be completed.

- Before you center the axle housing, make sure the vehicle is at normal ride height, on level ground, with the suspension supporting the full vehicle weight.
- Determine if the axle housing is centered by measuring the distance between the tire and chassis, using the exact same points on each side of the vehicle to ensure accuracy.

**HINT:** For example, measure from the edge of a tire tread lug to the outboard side of the chassis, then repeat the measurement on the other side of vehicle using the exact same points.

- If the two measurements are equal, the axle is centered. If the measurements vary, divide the difference in half to determine the amount of adjustment required. **HINT:** If the axle housing is not centered, the chassis can be laterally shifted using either of the following methods.

#### Ratchet Strap (preferred)

- Attach a heavy duty ratchet strap to the chassis on one side of the vehicle, and to the axle housing on the other side.
- Tighten the strap in small increments to pull the chassis in alignment with the axle.
- Take measurements after each adjustment until centered.

#### Steering Wheel

- Have a partner turn the steering wheel in small increments to shift the vehicle chassis side-to-side.
- After each adjustment, have your partner hold the steering wheel steady while you take measurements.

### ❑ 5. SET ADJUSTABLE TRACKBAR LENGTH AND MOUNT TO AXLE

**IMPORTANT:** The length of the Adjustable Trackbar must be set with the axle housing perfectly centered and the vehicle at normal ride height.

- With the axle housing centered beneath the chassis, adjust the length of Adjustable Trackbar by rotating the Axle End (A) until the Spherical Ball End aligns with the mounting holes on the axle bracket.

Apply anti-seize lubricant to original mounting bolt threads and adjustment threads of trackbar.

- Install Axle End (A) of Adjustable Trackbar to the axle bracket by securing with the original mounting hardware.
- Take measurements again to ensure axle housing is perfectly centered and make any final adjustments if necessary.
- Once all adjustments are complete, fully tighten the Jam Nut (C) to prevent Adjustable Trackbar length from changing. **HINT:** *It may be easier to tighten Jam Nut with the Adjustable Trackbar removed from the vehicle.*
- Tighten original mounting bolt on axle bracket to 75 ft-lb. using a torque wrench.

## Maintenance

Check torque specifications regularly.

Regular cleaning with pressurized water is recommended to maximize reliability.

---

©2013 JKS Manufacturing, Inc & Aftermarketing, LLC  
Revision Date 10/31/2013